

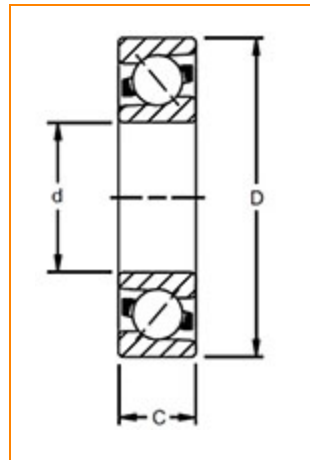
**TIMKEN****The Timken Company**

4500 Mt Pleasant St. NW

N. Canton, OH 44720

**Phone:** (234) 262-3000**E-Mail:** [CustomerCAD@timken.com](mailto:CustomerCAD@timken.com) • **Web site:** [www.timken.com](http://www.timken.com)**Part Number 7304 BTN1, Timken® Single Row Angular Contact Ball Bearings (7200, 7300)**

Timken® angular contact ball bearings are designed for combination radial and axial loading. Single-row bearings have high thrust capacity in one direction. Some single-row bearings are specifically designed for duplex mounting in sets for maximum performance.



[Dimensions](#) | [Basic Load Ratings](#) | [Factors](#) | [Specifications](#) | [Abutment and Fillet Dimensions](#)

**Dimensions**

<b>d - Bore</b>	20.00 mm 0.7874 in
<b>D - Outer Diameter</b>	52.00 mm 2.0472 in
<b>Bearing Width</b>	15.00 mm 0.5906 in
<b>Contact Angle</b>	40 °

**Basic Load Ratings**

<b>C0 - Static Radial Rating</b>	9700 N 2180 lbf
	17200 N



C1 ISO - Dynamic Radial Rating	17500 N 3888 lbf
--------------------------------	---------------------

## Factors

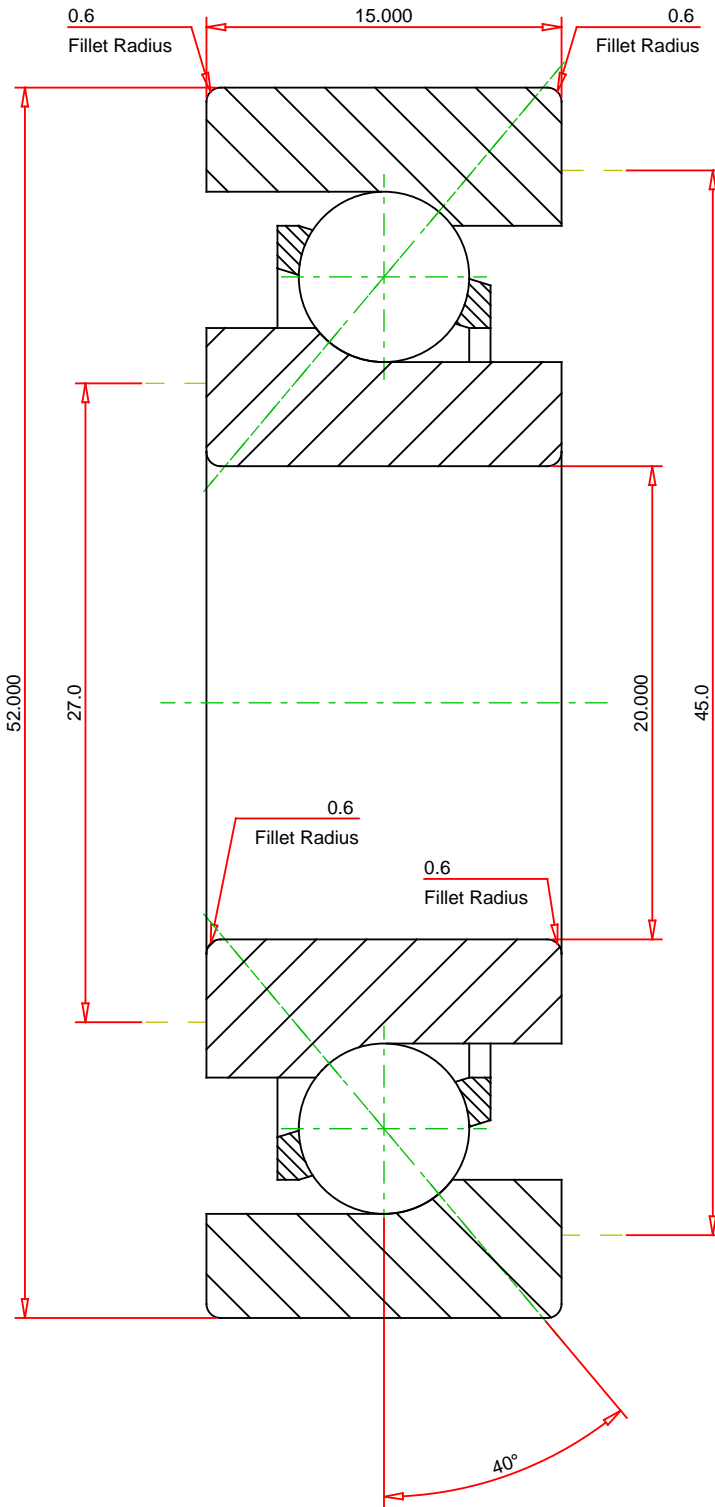
Limiting Speed (Grease)	13000 rpm
Limiting Speed (Oil)	18000 rpm

## Specifications

Ball Type	STEEL
Cage Type	Molded
Cage Material	Polyamide
Bearing Weight	0.14 Kg 0.309 lb
Design Units	METRIC
R - Inner Ring "Touch" Radius	0.6
r - Outer Ring "Touch" Radius	0.6
Features	Open

## Abutment and Fillet Dimensions

R - Inner Ring "To Clear" Radius <sup>1</sup>	0.60 mm 0.024 in
r - Outer Ring "To Clear" Radius <sup>2</sup>	0.60 mm 0.024 in
da - Inner Ring Backing Diameter	27.0 mm 1.063 in
Da - Outer Ring Backing Diameter	45.00 mm 1.7720 in



METRIC UNITS

Number of Balls Per Row 10  
 Bearing Weight 0.140 kg

**TIMKEN**®

**7304 BTN1**  
 Timken® Single Row Angular Contact Ball Bearings  
 (7200, 7300)

**THE TIMKEN COMPANY**  
 NORTH CANTON, OHIO USA

Dynamic Radial Rating 17300 N  
 Static Radial Rating 9700 N

Every reasonable effort has been made to ensure the accuracy of the information contained in this writing, but no liability is accepted for errors, omissions or for any other reason.

**FOR DISCUSSION ONLY**